

Emergency Contact
Satellite Phone
+881 622 449 700

Dyne Under The Moon

WARA Spring 12 hr Rogaine
14 September 2019



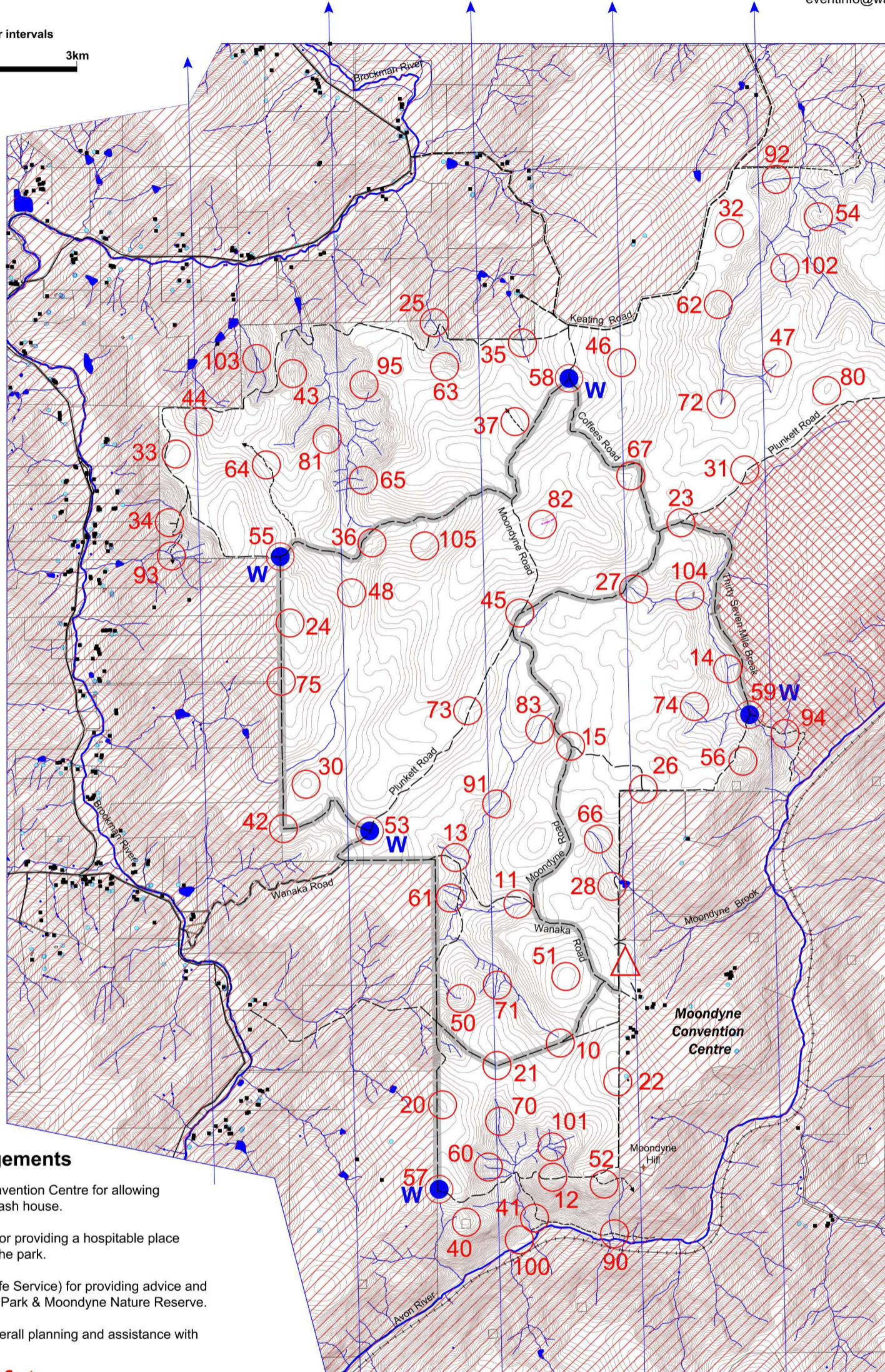
Western Australian Rogaining Association
 PO Box 1201, Subiaco, WA 6904

eventinfo@wa.rogaine.asn.au



Legend

- Buildings**
 - Continuation**
 - Contours**
 - Controls**
 - Dams**
 - Fences**
 - Fence Crossing Point**
 - Hash House**
 - Magnetic North Line**
 - Mineral Workings**
 - Out of Bounds**
 - Patrolled Road**
 - Road, Bitumen**
 - Road, Unsealed**
 - Rock Surface**
 - Survey Markers (historic)**
 - Telecomms Tower**
 - Track**
 - Trainline**
 - Unexploded Ordnance**
 - Watercourse**
 - Water Drop**
 - Water Tanks & Soaks**
- Sunset (14 Sept) 6:08 pm**
Moonrise (14 Sept) 6:12 pm
- Setters** Eva Scibiorski, Joe Scibiorski
Veters Alan Kerr, Dave Smith



If you see any of these, please tell admin....



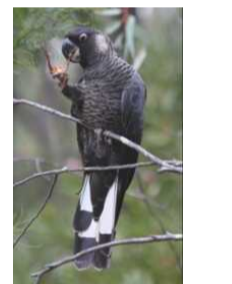
Chuditch (western quoll)



Woylie (brush-tailed bettong)



Black-footed rock wallaby



Carnaby's Cockatoo



Moondyne Joe

Acknowledgements

Peter and Christine Nott of the Moondyne Convention Centre for allowing WARA to use their beautiful grounds for our hash house.

Wendy from the "Peace Be Still" guesthouse for providing a hospitable place to stay during setting and local knowledge of the park.

Paul Udinga (Senior Ranger, Parks and Wildlife Service) for providing advice and facilitating access to the Avon Valley National Park & Moondyne Nature Reserve.

WARA committee & members for help with overall planning and assistance with the mapping software.

Safety

1. The area east of Thirty Seven Mile Break is strictly OOB due to the potential for unexploded ordnance.
2. There are a few fully or partly-fenced off features in the course area (e.g. water well near control 45, disused mining trench near 82). These are not marked on the map. Look and admire but don't fall in.
3. Some of the terrain is steep and the tracks rough. Take care!!

Important Notes

1. There is a magnetic anomaly in the NE corner of the map around controls 32-102-92-53 which causes compasses to read up to 20 deg clockwise from magnetic north. As we have not mapped the extent or variability of the anomaly you are advised to take extra care navigating in this area. The contours (topography) are accurate.
2. The fence immediately west of the hash site can be crossed at the designated crossing point or the main entry gate. No other fences in or bounding the rogaine area are to be crossed. If you cross a fence, you are out of bounds.
3. Not all roads or tracks are mapped. Those that are mapped are reasonably (but not perfectly) accurate.
4. The entire course is in the Avon Valley National Park & Moondyne Nature Reserve. All National Park regulations apply. In particular, ALL flora and fauna are strictly protected, collecting firewood is not permitted and all historic relics in the area are protected.



The State Government through the Department of Local Government, Sport and Cultural Industries, and Lotterywest is a major supporter of rogaining in Western Australia. Sport and recreation builds stronger, healthier, happier and safer communities.

WARA acknowledges the Traditional Owners of the land we are rogaining on today and would like to pay our respects to Elders past and present.

This map was produced using OpenOrienteering Mapper using data supplied by Landgate issued under licence. Possession of this map does not give right of entry to area.

The fauna images on this map were sourced from DPAW. The image of Moondyne Joe was sourced from the Fremantle Prison website (original by Ian Elliot / Hesperian Press).



Dyne Under The Moon

WARA 12 Hour Rogaine

14 September 2019

Emergency Satellite Phone

+881 622 449 700

Number	Control Descriptions	Points
10	The track junction	10
11	The watercourse	10
12	The knoll	10
13	The watercourse	10
14	The watercourse junction	10
15	The track junction	10
20	The broad knoll	20
21	The track bend, 50m @ 200°	20
22	The track	20
23	The track junction	20
24	The broad knoll	20
25	A watercourse	20
26	The track junction	20
27	The watercourse	20
28	The spur	20
30	The broad knoll	30
31	The track bend	30
32	The broad knoll, southern end	30
33	The broad knoll	30
34	The knoll	30
35	The watercourse	30
36	A gully	30
37	The track	30
40	The broad spur	40
41	The track bend	40
42	The track bend, 50m @ 180°	40
43	The knoll	40
44	The gully	40
45	The track junction, 80m @180°	40
46	The broad knoll	40
47	Head of the gully	40
48	The broad gully	40

Number	Control Descriptions	Points
50	Head of the gully	50
51	The broad knoll	50
52	The track	50
53	The track junction. WATER DROP	50
54	The knoll	50
55	The track junction. WATER DROP	50
56	The spur	50
57	The track bend. WATER DROP	50
58	The track junction. WATER DROP	50
59	The track junction. WATER DROP	50
60	A watercourse	60
61	The spur	60
62	The gully	60
63	Head of the gully	60
64	The track	60
65	Head of a watercourse	60
66	The watercourse	60
67	The broad spur	60
70	The watercourse	70
71	A spur	70
72	Head of the watercourse	70
73	The track	70
74	The watercourse	70
75	A 1080 sign, 120m at 80°	70
80	The broad knoll, southern end	80
81	The knoll, eastern edge	80
82	Western edge of mineral workings	80
83	The watercourse	80

Number	Control Descriptions	Points
90	The track	90
91	The watercourse	90
92	The watercourse	90
93	The track-watercourse intersection	90
94	The track-watercourse intersection	90
95	The spur	90
100	The gully	100
101	A spur	100
102	The watercourse	100
103	The watercourse junction	100
104	The rocky outcrop, western edge	100
105	The broad gully	100

Additional Information		
Key Event Times:		
Pre-Event Briefing	9:45 am Saturday	
Start	10:00 am Saturday	
Finish	10:00 pm Saturday	
Hash House:		
Opens	5 pm Saturday	
Closes	11:00 pm Saturday	
Re-opens	6:00-8:00 am Sunday	
Astronomical Times:		
Sunset	6:08 pm Saturday	
Moonrise	6:12 pm Saturday	
Scoring:		
Controls Used	72	
Total Points	3700	
Penalties:		
10 points per minute late or part thereof		
Disqualification if more than 30 mins late		
Safety: If injured, go to a water drop or patrolled road (shown on map) and wait for help.		
Water drops are at controls 53, 55, 57, 58, 59		

Note: Several nesting emus and commercial bee hives were seen during setting/vetting. Steer clear for your own (and their) safety.